



REGIONAL SPECIALISED METEOROLOGICAL CENTRE -TROPICAL CYCLONES, NEW DELHI TROPICAL WEATHER OUTLOOK

DEMS-RSMC TROPICAL CYCLONES NEW DELHI DATED 19.06.2025

TROPICAL WEATHER OUTLOOK FOR THE NORTH INDIAN OCEAN (THE BAY OF BENGAL AND THE ARABIAN SEA) VALID FOR THE NEXT 168 HOURS ISSUED AT 0600 UTC OF 19.06.2025 BASED ON 0300 UTC OF 19.06.2025.

LAND:

Yesterday's **well marked low pressure area** over Gangetic West Bengal moved slowly northwestwards, lay over northeast Jharkhand & adjoining Gangetic West Bengal at 0000 UTC and persisted over the same region at 0300 UTC of today, the 19th June 2025. The associated upper air cyclonic circulation extended upto 7.6 km above mean sea level tilting southwards with height. It is likely to move slowly northwestwards during the next 24 hours.

BAY OF BENGAL:

Scattered to broken low and medium clouds with embedded intense to very intense convection lay over north Bay of Bengal and Andaman Sea. Scattered low and medium clouds with embedded moderate to intense convection lay over rest Bay of Bengal.

*PROBABILITY OF CYCLOGENESIS (FORMATION OF DEPRESSION) DURING NEXT 168 HRS:

24 HOURS	24-48 HOURS	48-72 HOURS	72-96 HOURS	96-120 HOURS	120-144 HOURS	144-168 HOURS
NIL	NIL	NIL	NIL	NIL	NIL	NIL

***NOTE: EVERY 24HR FORECAST IS VALID UPTO 0300 UTC (0830 IST) OF NEXT DAY**

LAND:

Yesterday's low-pressure area over southwest Rajasthan & neighbourhood became less marked at 0000 UTC of today, the 19th June 2025.

ARABIAN SEA:

Scattered low and medium clouds with embedded intense to very intense convection lay over northeast adjoining eastcentral Arabian Sea off Gujarat – Maharashtra coasts and Gulf of Cambay. Scattered low and medium clouds with embedded isolated moderate to intense convection lay over westcentral & south Arabian Sea, Lakshadweep Islands, Maldives & Comorin area.

*PROBABILITY OF CYCLOGENESIS (FORMATION OF DEPRESSION) DURING NEXT 168 HRS:

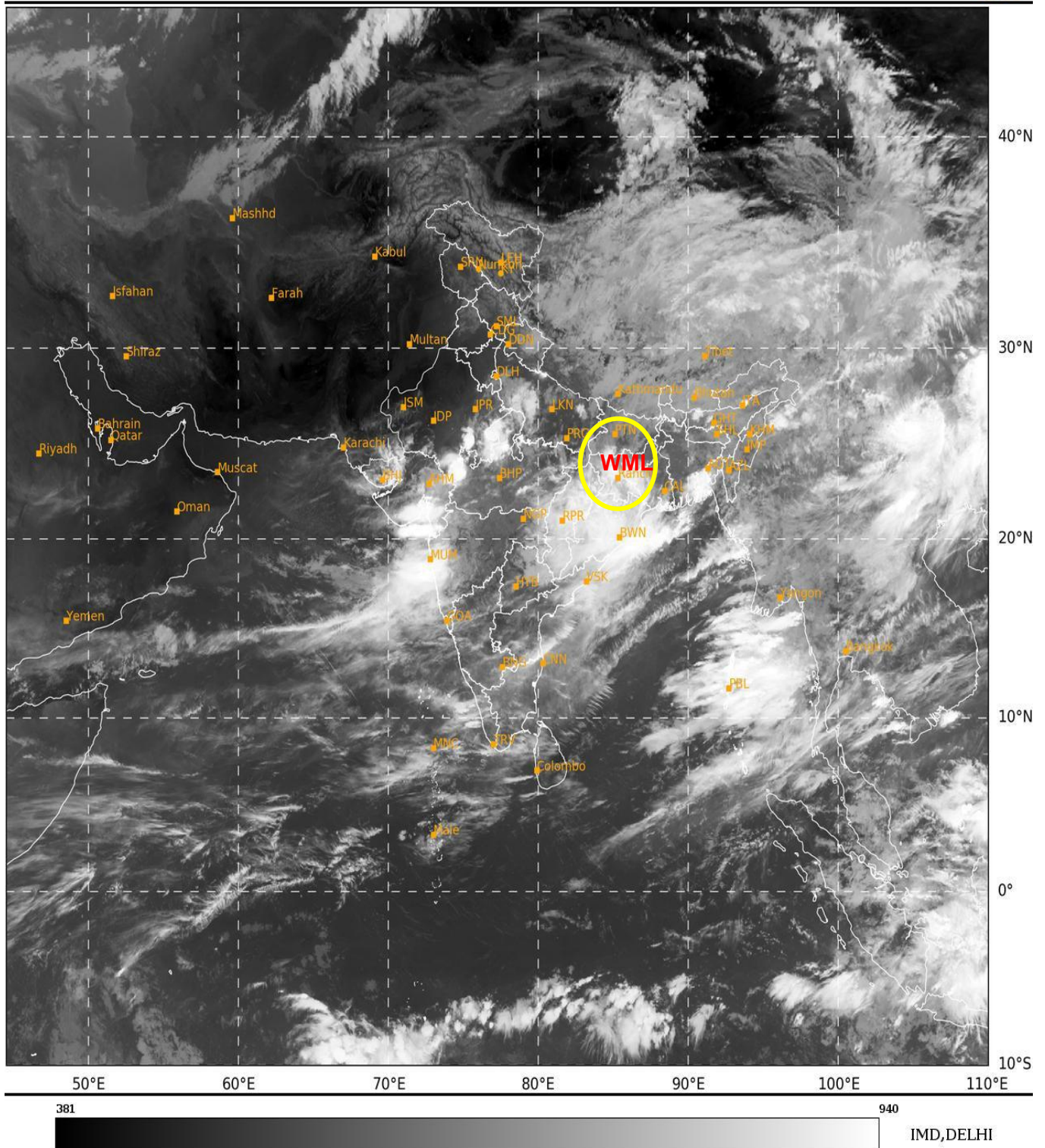
24 HOURS	24-48 HOURS	48-72 HOURS	72-96 HOURS	96-120 HOURS	120-144 HOURS	144-168 HOURS
NIL	NIL	NIL	NIL	NIL	NIL	NIL

***NOTE: EVERY 24HR FORECAST IS VALID UPTO 0300 UTC (0830 IST) OF NEXT DAY**

REMARKS: NIL

SAT : INSAT-3DR IMG
 IMG_TIR1 10.8 um
 L1C Mercator

19-06-2025/(0315 to 0342) GMT
 19-06-2025/(0845 to 0912) IST



WML: WELL MARKED LOW PRESSURE AREA

Cloud distribution: (a) Isolated: <25%, Scattered:25-50%, Broken: 51-75%, Solid:>75%, Convection Intensity: (a) Weak: Cloud Top Temperature(CTT)>-25°C,(b)Moderate:CTT:-25°Cto-40°C,(c)Intense:CTT: -41°Cto -70°Cand(d)Very Intense::Less than -70°C
 PROBABILITYOFCYCLOGENESIS(FORMATIONOFDEPRESSION):NIL:0%,LOW:1-33%,MODERATE:34-66%ANDHIGH:67-100%
 ThisisaguidanceBulletinforWMO/ESCAPPanelMembercountries.VisitrespectiveNationalwebsitesforCountryspecificBulletins